

Exams and end of module assessments

Session description



- It's almost time for the final assessment. Whether you have an emTMA, EMA or exam this session is the one stop shop to answer practical questions. We will be joined by a student support team expert so we can discuss and answer the kinds of questions that come up about these important chances to finish up your module.

What are AC live sessions?



- Studenthublive is non modular and focuses on study skills relevant to higher education
- SHL AC live sessions are a hybrid between our live broadcasts and our interactive adobe connect workshops
- They involve guest discussion and then application of ideas
- All events are always advertised on our website along with studenthome news, social media channels and careers sources
- All events are bookable; workshops do fill up as they are popular

Online room basics



- Polls are anonymous to other participants but the chat box will have your logged in name associated with your comments during the live session.
- All online sessions are recorded and available to view on catch up on a public facing website.
- Slides are available to download during the session and from <https://studenthublive.open.ac.uk/content/end-module-assessments-and-remote-exams-14-may-2024> .

Please be aware



- These sessions are large scale
- They are very busy
- There is lots of interaction
- They are not the same as other tutorials
- You can maximise slides on your own screen by clicking the icon
- You can also feel free to ignore the chat if it is too distracting for you personally



Inclusivity



- We welcome all students at our sessions.
- Please do be aware that they can be very busy and some students may struggle with the non-scripted nature.
- Slides are available to download within the live session and from the event page on the studenthublive website at xxx to follow along or prepare for what will come up.

Please



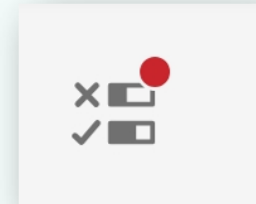
- Do NOT share any personal information in the chat pod during the session.
- On the recording names will be anonymised to user number.
- However, if you type anyone's full name or any other personal information in the chat pod it can be seen by everybody and it would also show up on the recording so we would not be able to make the recording available after the session.

What do you want to learn?



Using the short answer poll provided please say what you are hoping to learn from today's session

(If you are on a mobile device remember you need to tap into the polling option)



To come back to these slides after completing a poll click on the share pod slides icon



Today's session format



- This is going to be a structured session in which I (Isabella) will talk to my guest (Elaine) about some of the common concepts involved with preparing for the final assessment on a module.
- We will discuss suggestions and gives some ideas to consider
- There will be dedicated interactivity points to discuss what this means to you (through chat or polls)
- Heidi will be answering questions in the chat and pulling together themes as needed

My guest Elaine



- Elaine is a tutor and educational support advisor

Elaine question 1



- We have built you as our student support team expert can you tell us a little bit about yourself and what you do within the student support team?

Forgetting



Question for everyone 1



- What do you do when you forget something?
- Please use the short answer poll to give your ideas and we will pick out some themes and hopefully find some suggestions and strategies between us

EMA workshop



- We had a dedicated SHL workshop where I provided lots of practical advice about preparing for EMAs.
- I am not going to cover the same information so please do watch the recording if you haven't already:

<https://studenthublive.open.ac.uk/content/preparing-and-producing-your-best-ema-2-may-2024>

Elaine question 2



- What would you suggest to those who have an upcoming EMA?

Don't underestimate



TMA's

EMA

Reality check



- What is involved in the EMA?
- Do you know what it is worth?
- Check you know what is involved.

Question for everyone 2



- What does EMA preparation mean to you?
- Please use the short answer poll to give your ideas and we will pick out some themes and suggestions

Exam workshop



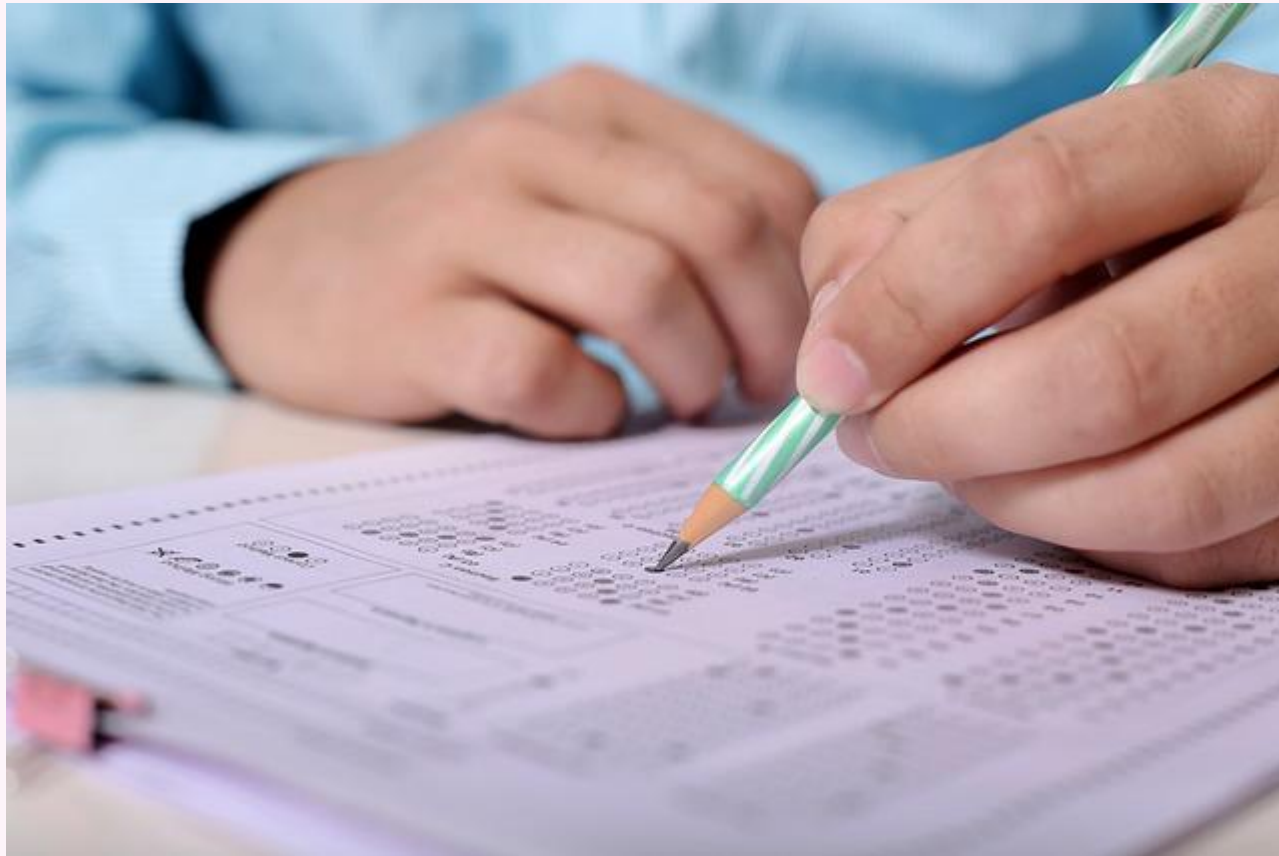
- We have a dedicated SHL workshop where I will be providing lots of practical advice about preparing for exams.
- I am not going to cover the same information so please do book in if you haven't already:
- <https://studenthublive.open.ac.uk/content/get-well-prepared-your-final-exams-16-may-2024>

Elaine question 3



- So we've talked about EMAs – what would you suggest to those people that are preparing for exams?

What is involved?



Use the SEP



Introduction to the Specimen Remote Examination Paper

Read this *before* you look at the paper.

The Specimen Remote Examination Paper (SEP) is in the style of the examination paper you will take at the end of the module, in both its layout and its content.

Focus on what is needed



Word cloud



- Using the option to type in where it says enter word here say **How do you feel about your upcoming final assessment?**
- Note that suggestions need to be a single word rather than a phrase / multiple words, if you press the space or enter button your first word will go through (so it won't make sense if that one word is not the whole answer).
- A word cloud is built up with common answers being larger so we can see if there are patterns

Enter word here

Elaine question 4

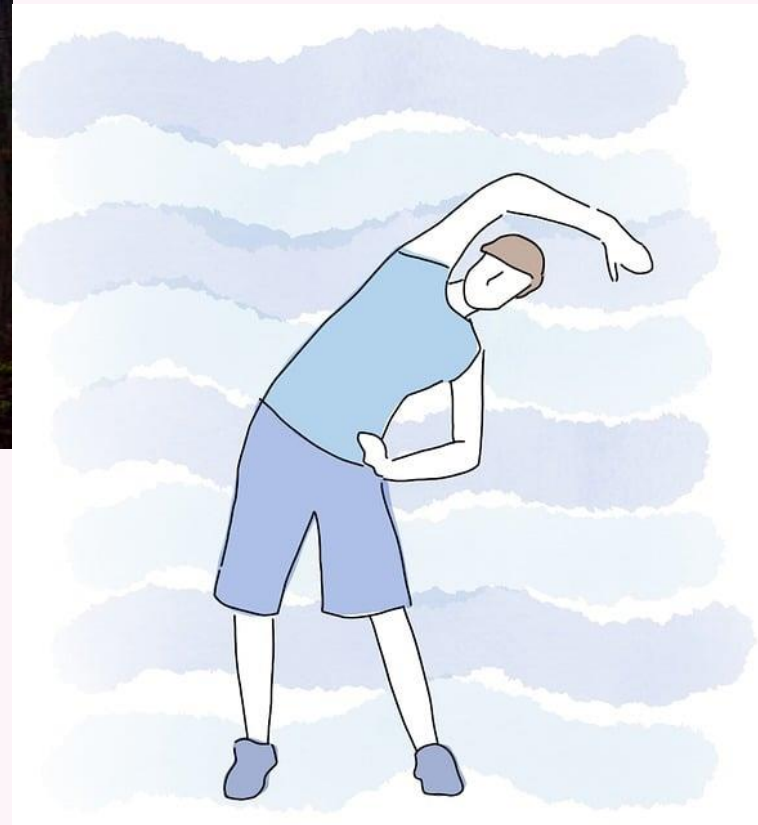


- Preparing for final assessment can be quite stressful and here at studenthublive we are concerned with students managing their wellbeing. Elaine you what do you suggest to help students manage their wellbeing at this time?

Support networks



Get exercise



You don't have to do everything!



Question for everyone 3



- What things could you potentially delegate to other people at this time?
- Please use the short answer poll to give your ideas and we will pick out some themes and suggestions

What happens when it goes wrong



- Use your support networks
- Contact your student support team for advice
- There may be an opportunity to apply for special circumstances – use the studenthome help centre (start typing special circumstances) or use <https://help.open.ac.uk/special-circumstances-exams-or-emas>

Elaine question 5



- We know many of our students are studying more than one module-what particular advice do you have for those balancing multiple modules with final assessments?

Plan effectively



Elaine question 6



- You talked to me about perspective – can you discuss what maintaining perspectives at this time might look like and any strategies to help?

Break things down



Take home message



- If preparing for the final piece of assessed work will involve different skills from TMA.
- Make use of all of the feedback so far.
- Give yourself enough time.
- Be realistic about what you can manage.

Feedback



Please complete the feedback form that is available at

<https://forms.office.com/e/tSS4aExJyg>

This is immensely valuable to provide information on how studenthublive is beneficial to students as well as to help us plan our future programme

(Please remember that as studenthublive is non modular we cannot provide subject based sessions- sorry!)

Upcoming events



- 16 May 11am Get well prepared for your final exam
- 23 May 11am Creative problem-solving: techniques for success
- 29 May 7pm Creative note-taking
- 6 Jun 7pm Critical thinking (Introductory)
- 13 Jun 7pm Critical thinking (Intermediate)
- **18 Jun 7pm Summer party!**

For more information on all past and upcoming events, go to <http://studenthublive.open.ac.uk/>