

Student hub live people



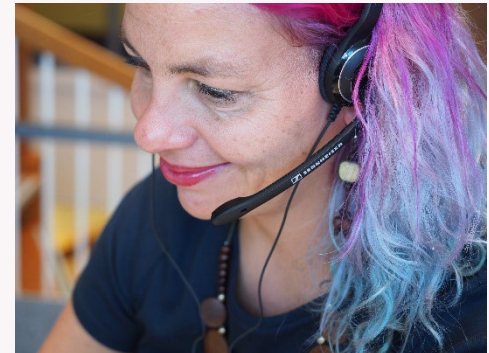
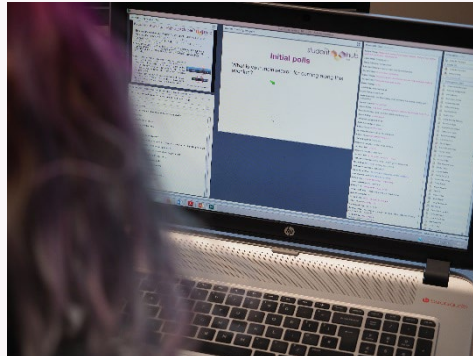
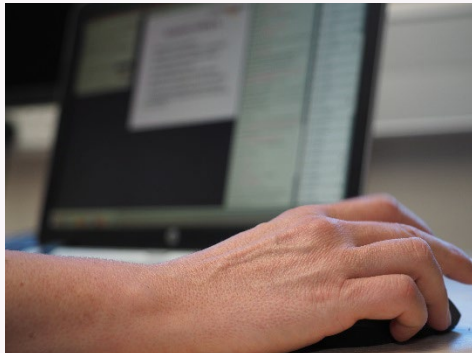
Margaret Greenhall is a study skills specialist. She has applied the same skills as you'll use in writing essays to write a book. She tutors on science level 1 and 2 courses. Her hobbies are baking, rowing and Lego.



Fred Motson has taught Law at undergraduate and postgraduate level for 15 years. He Chairs a first year Law module and teaches across Levels 1, 2 and 3. His hobbies include 5-a-side football, computer games and following Derby County FC.

What are student hub live online sessions?

- All student hub live sessions are non modular and focus on skills relevant to study at university level
- Polls are anonymous to other participants but the chat box will have your logged in name associated with your comments during the live session.
- All online sessions are recorded and available to view on catch up on a public facing website.
- Slides are available to download during the session (*not accessible on mobile devices*) and from <http://studenthublive.open.ac.uk/>.



Workshop

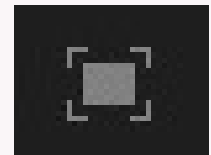
- This is going to be a structured workshop to help you advance your essay planning
- It is not subject related as we have people from all over the university on the session
- There is a lot of interaction so please be ready to answer polls (questions) or add to chat pod during the session

Session purpose

- **Is for:**
- Covering general advice about essay planning
- Giving some ideas for how to plan
- Provide a space to share ideas and connect with other students
- **Is not for:**
- Telling you what you HAVE to do
- Providing any module specific advice

Please be aware

- These sessions are large scale
- They are very busy
- There is lots of interaction
- They are not the same as other tutorials
- Chat may be off topic – that's OK
- You can maximise slides on your own screen by clicking the icon



Please

- Do NOT share any personal information in the chat pod during the session
- On the recording names will be anonymised to user number
- However if you type anyone's full name or any other personal information in the chat pod it can be seen by everybody and it would also show up on the recording

Mastering Essay Planning



This was our advert...

This essay planning workshop focuses on tweaking your plan to give the best possible argument for the question you are answering. Aimed mainly at students studying Level 3 or Postgraduate it will help you to identify the key points and the order of those points to achieve the best outcome. This workshop will look at how to tackle more complex essays, such as comparisons and critical evaluations. The 'Developing your essay planning (Intermediate)' workshop introduces the basic approaches and techniques used in this workshop and it would be extremely beneficial to have attended or watched the recording of that workshop prior to joining this one.

Poll time

What's different about higher level essays compared to those you did in your foundation or year 1 courses?

Essay planning stages poll

- What are the stages of planning an essay?

Essay planning stages

- Analyse the question
- Plan the information search
- Plan the essay writing

- Plan your time

Essay Stages

- Analyse question – process/topic/criteria
- Plan research
- Research
- Return to question
- Brain dump
- Organise brain dump
- List of points
- Plan – evaluate, prioritise
- Map
- Write – no one else will see it yet
- Edit – does it answer the question
- Check – Flow, proofread

Essay parts

- Introduction 10 -15%
- Paragraphs 75 - 80%
- Conclusion 10%
- References

Using PEEL to write paragraphs

- PEEL
 - Point – make it in first sentence
 - Evidence – support it with facts
 - Explain – why the evidence is supportive and why is it relevant
 - Link – link the paragraph to the next section and/or question gives flow to essay

Brain dump

- Huge amount of data
- Don't know what is relevant
- Or how it connects
- Need to dust the corners of your brain

Rules:

- Sets of 8 ideas
- No censorship
- No organisation
- Wait a day to organise

Post its

Piles of 8 post-its

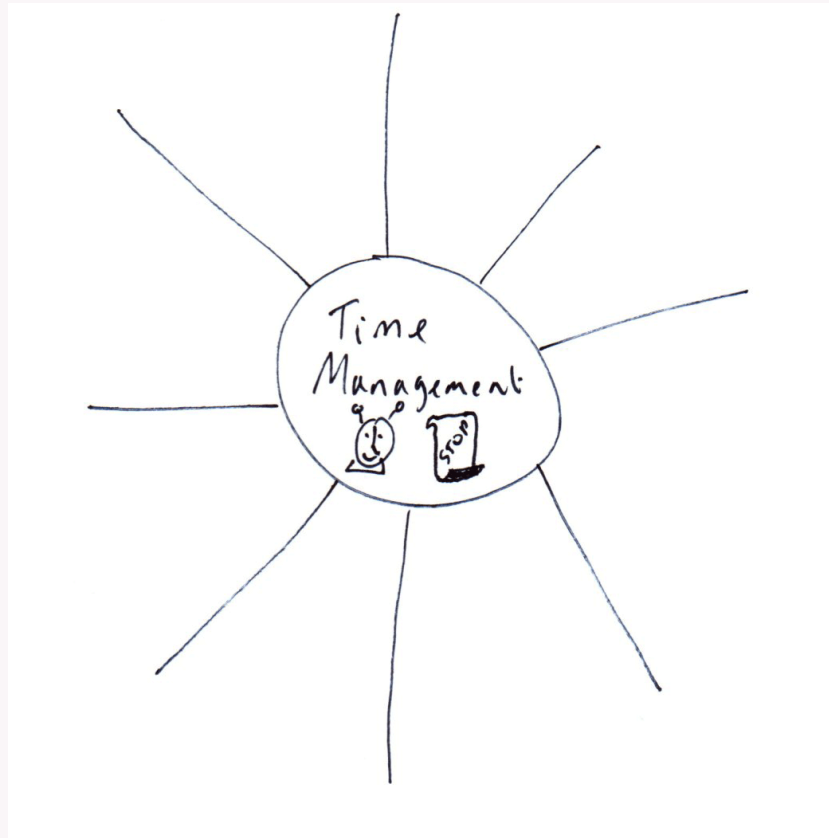
Rules:

Once you start a pile use them all

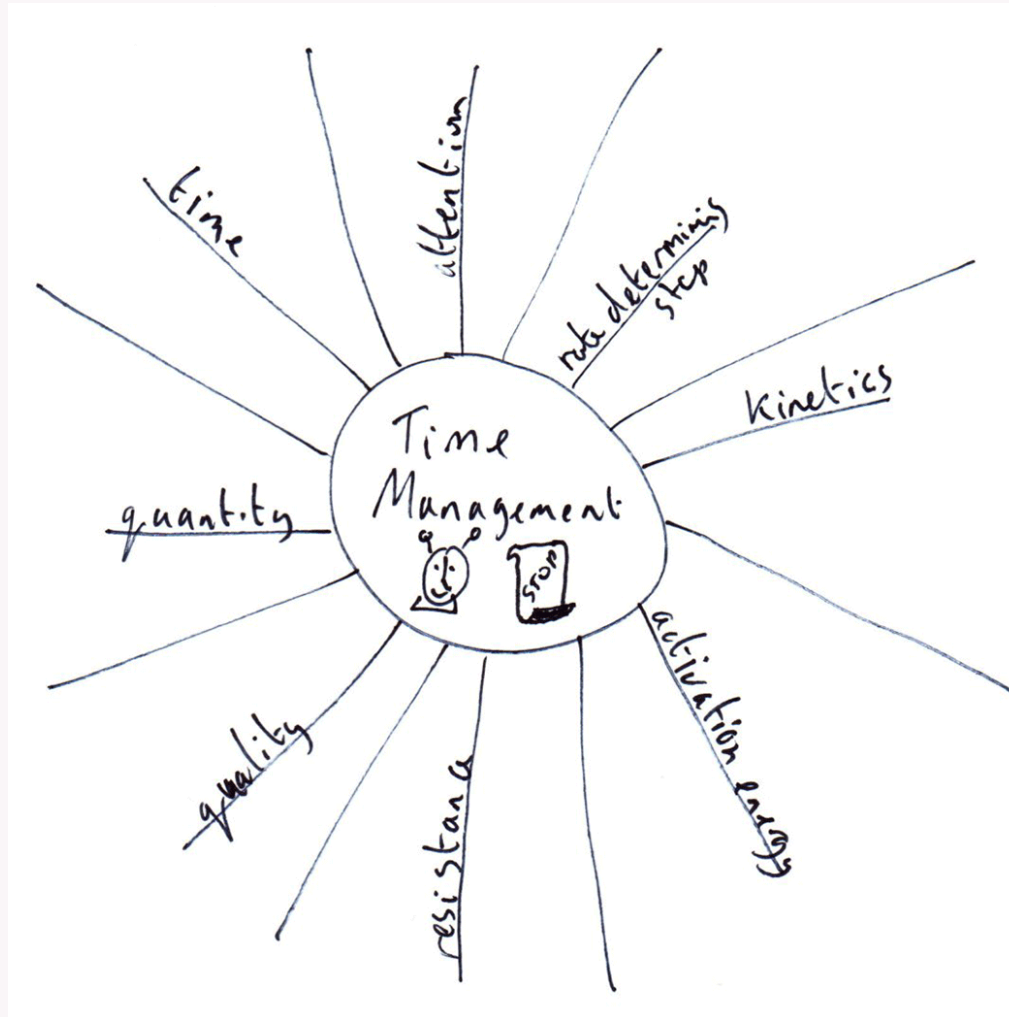
One thought per post-it



Sun diagram step 1



Sun diagram step 2



On computer

On computer

Any way you can think of but rules are :

- Sets of 8
- No censorship
- No organisation

Poll

Do you have any techniques for brain dumping?

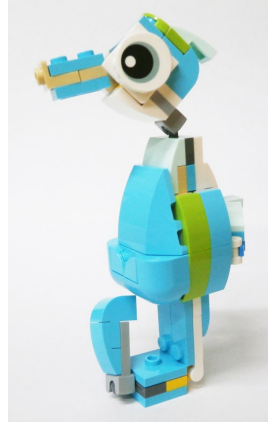
Poll time

Once you've chosen your points how do you evaluate?

Evaluation



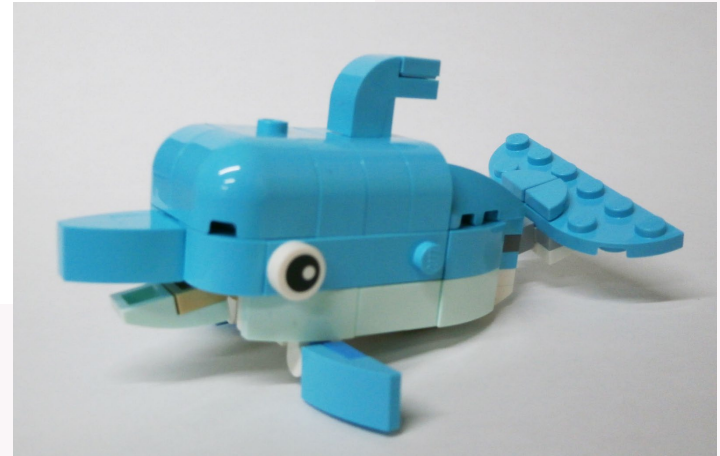
NO



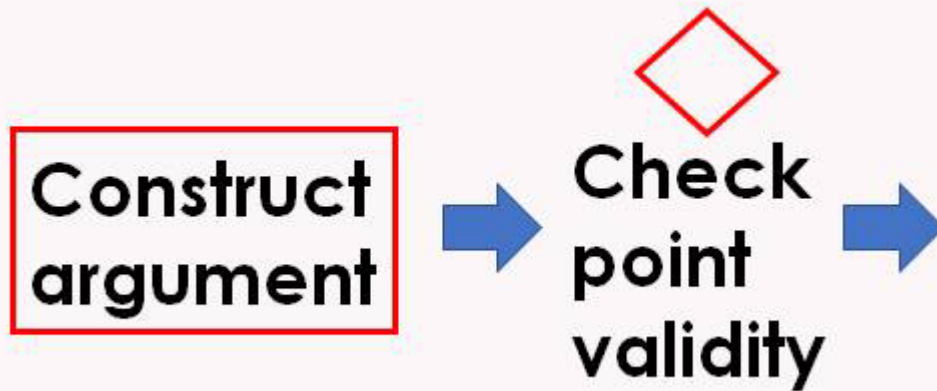
MAYBE



YES



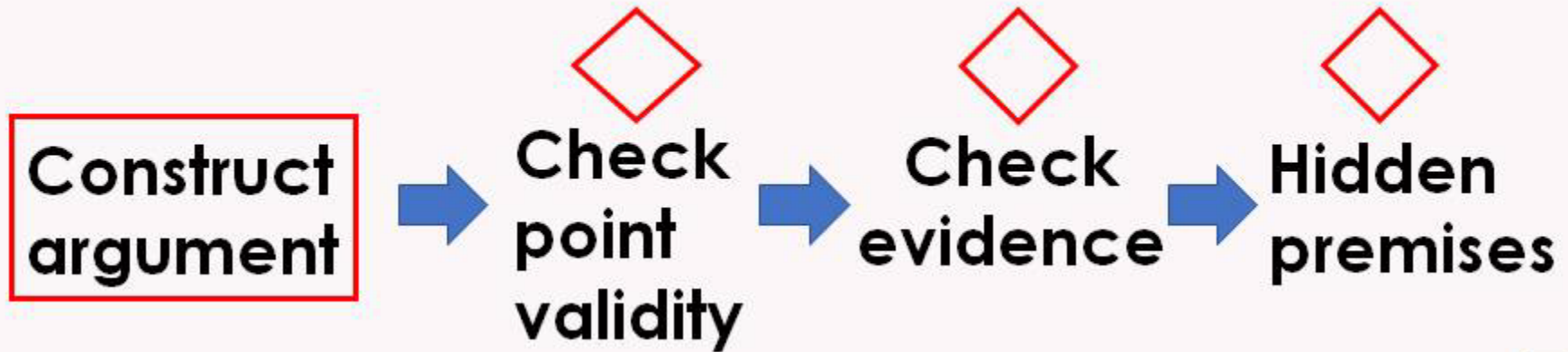
Evaluation



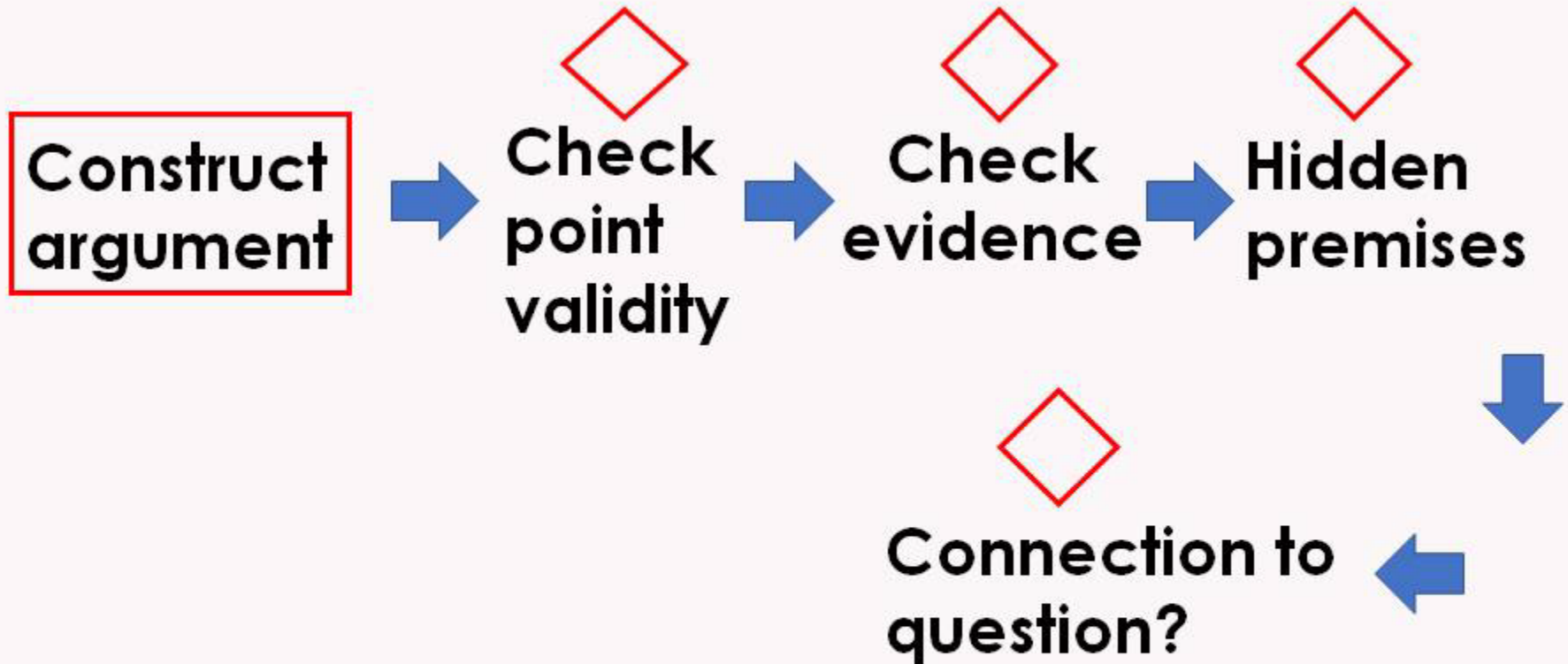
Evaluation



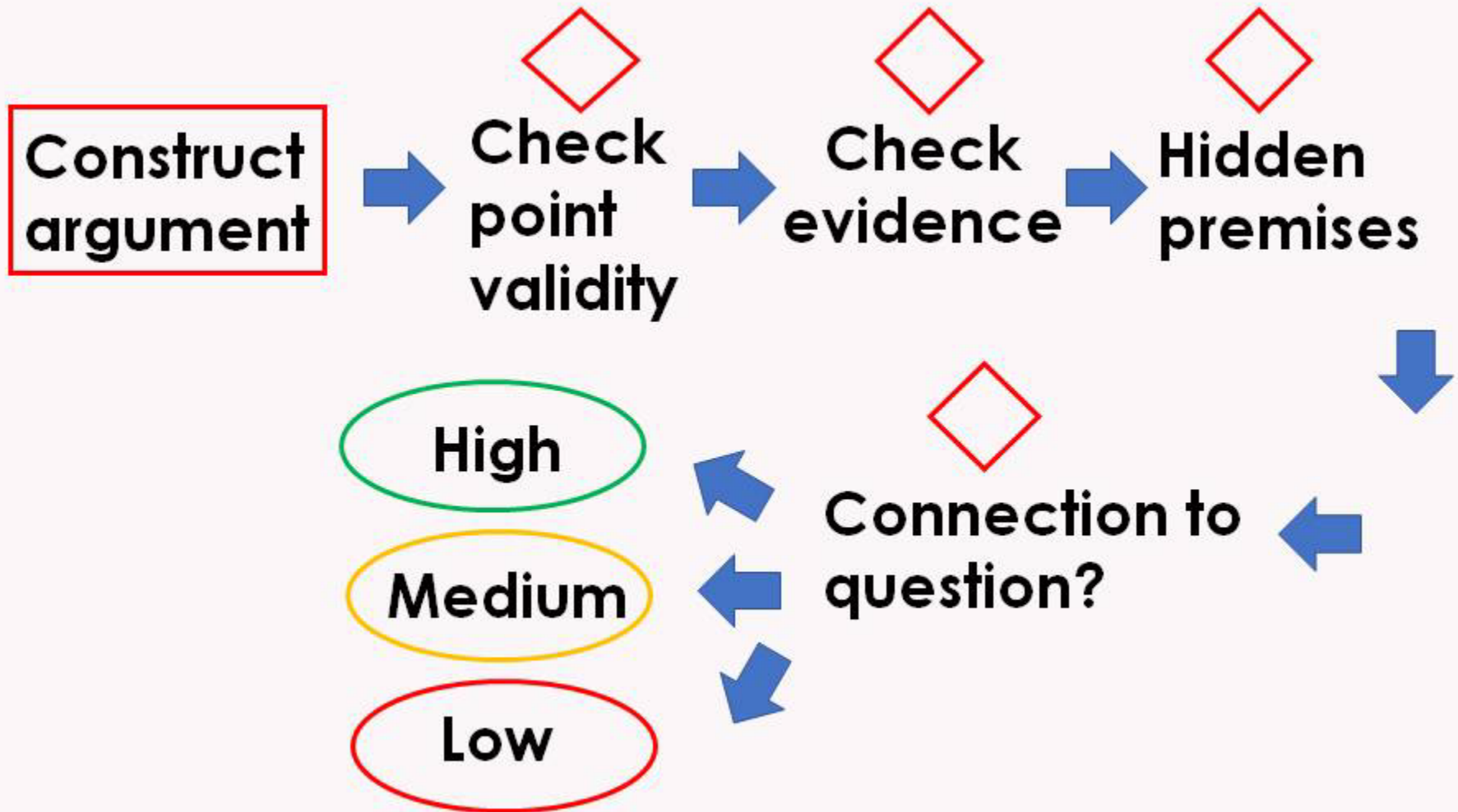
Evaluation



Evaluation

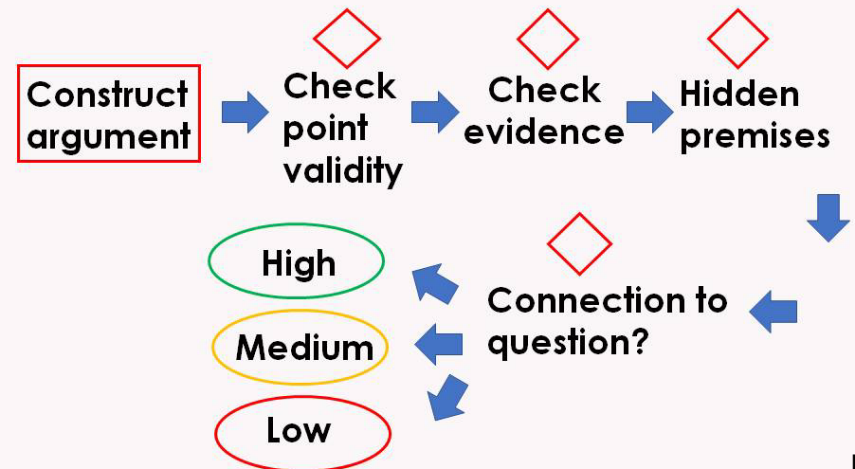


Evaluation



Example (poll)

- Question are cats mammals?
- Evidence 1: Mammals have four legs
- Evidence 2: Cats have four legs
- Point: Cats are mammals



Option 1: strengthen your evidence

- Question are cats mammals?
- Evidence 1: Only mammals both have fur and feed their young with milk
- Evidence 2: Cats have fur and produce milk
- Point: Cats are mammals

Option 2: weaken your point

- Question are cats mammals?
- Evidence 1: Mammals have four legs
- Evidence 2: Cats have four legs
- Point: Cats are probably mammals

More covered in critical thinking sessions

<http://studenthublive.open.ac.uk/>

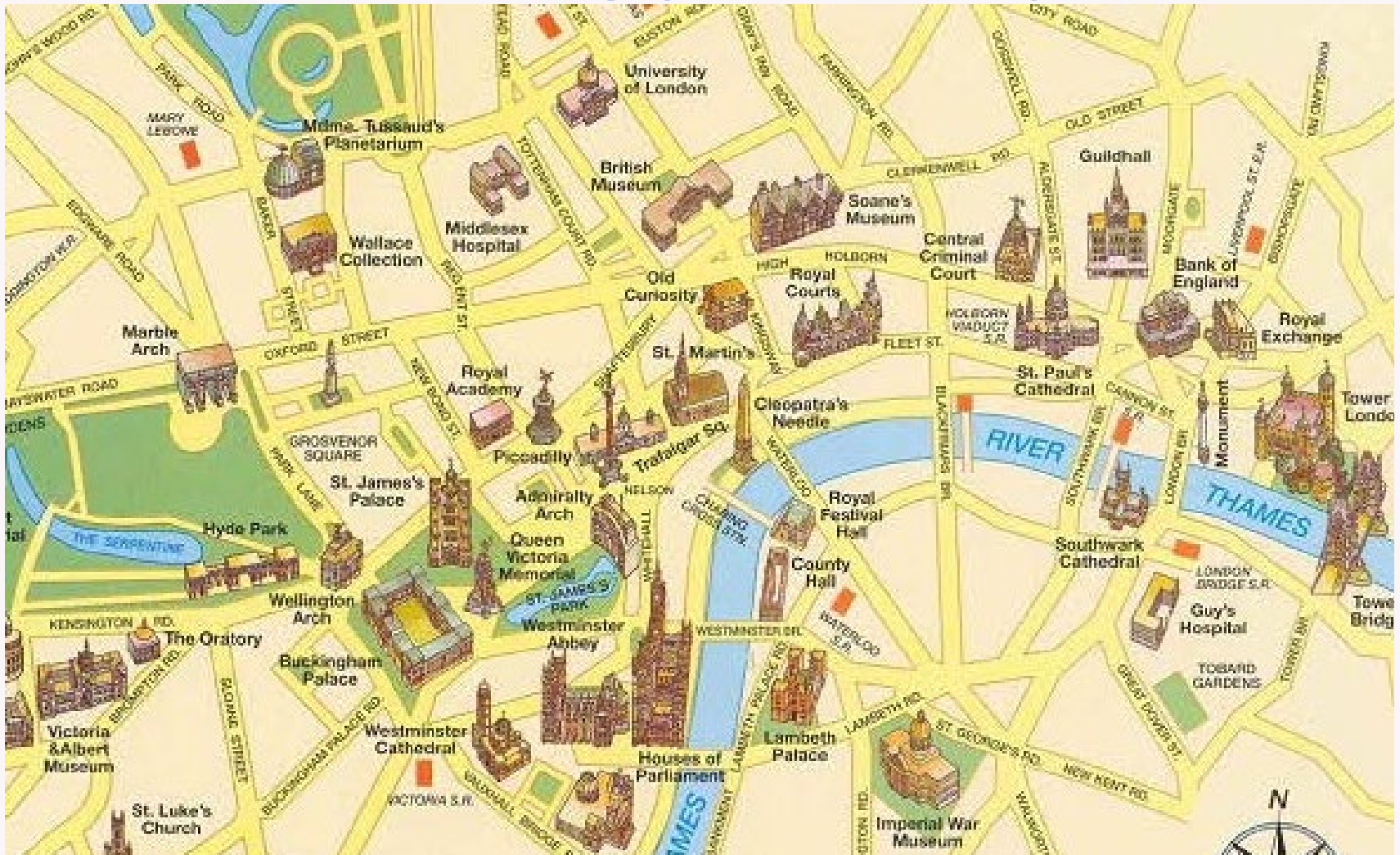
Poll time

Once you've evaluated your points how do you prioritise and order them?

Prioritising – menu shuffle

- Menu shuffle – have them in moveable cards/post its or excel file.
- Do a quick first ordering and starting from the bottom of the list is this more or less important than the one above.
- If it's more move it up one.
- Keep going until none of them above it are more important.
- Return to bottom of the list and go again.

Mapping your essay



What things would be important on your tour?

Structure - As written/read

Introduction



Paragraph 1



Paragraph 2

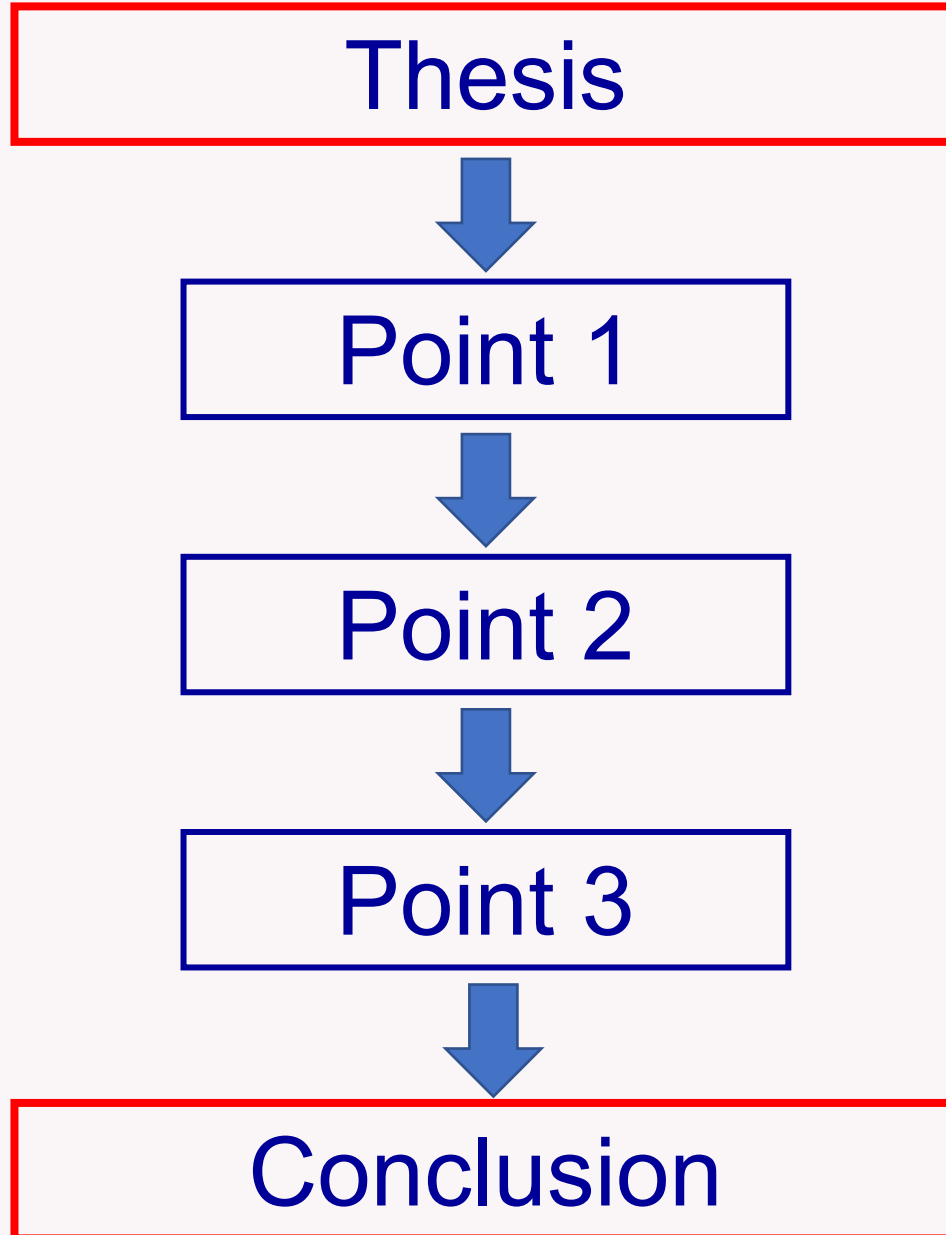


Paragraph 3



Conclusion

Depth Structure



Breadth structure

Thesis



Point 1

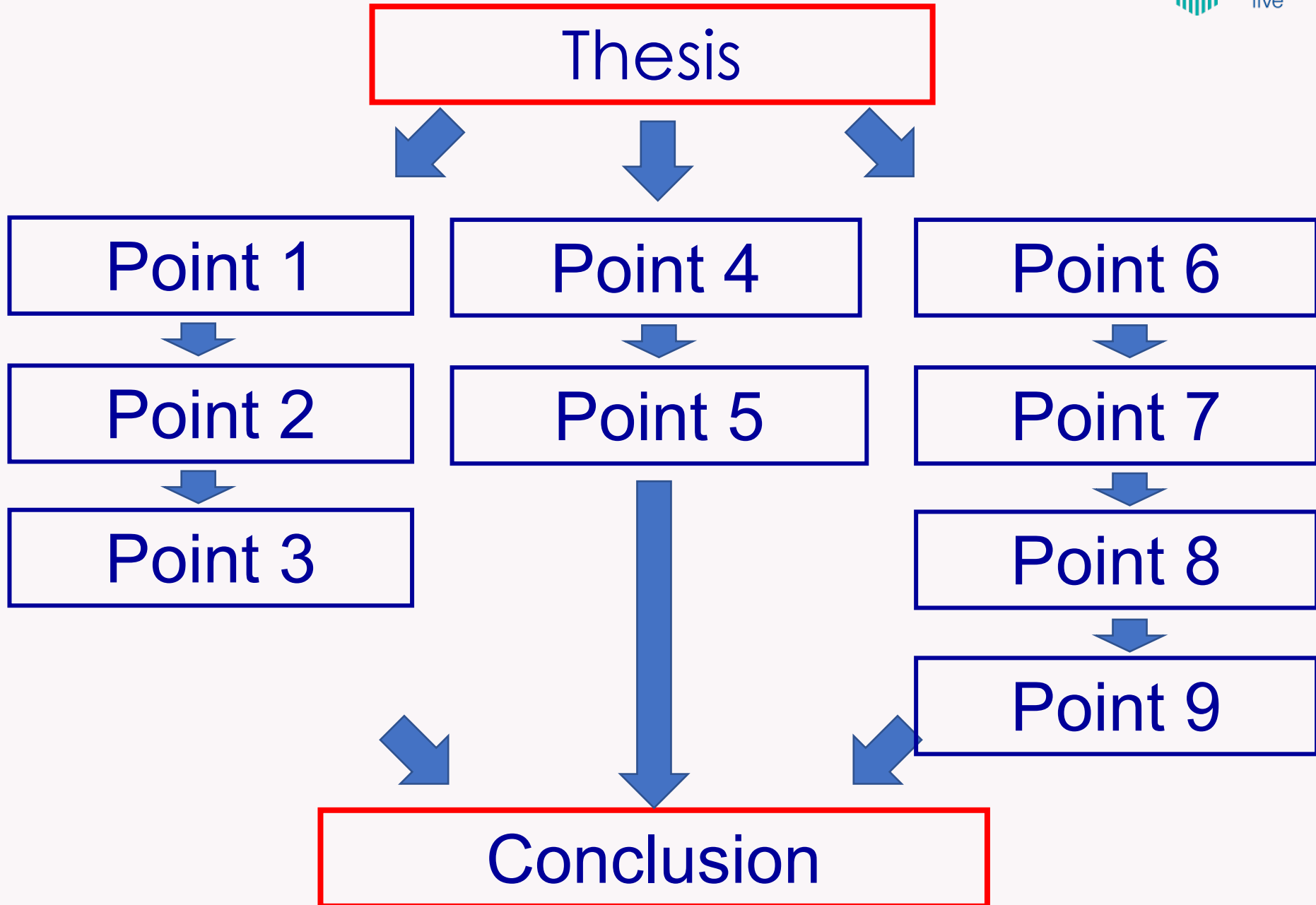
Point 2

Point 3



Conclusion

Branched structure



Poll

How would you map your essay?

BRICKS

ROWING

INDOORS

FAMILY

STATIONARY

CREATIVE

OUTDOORS

FRIENDS

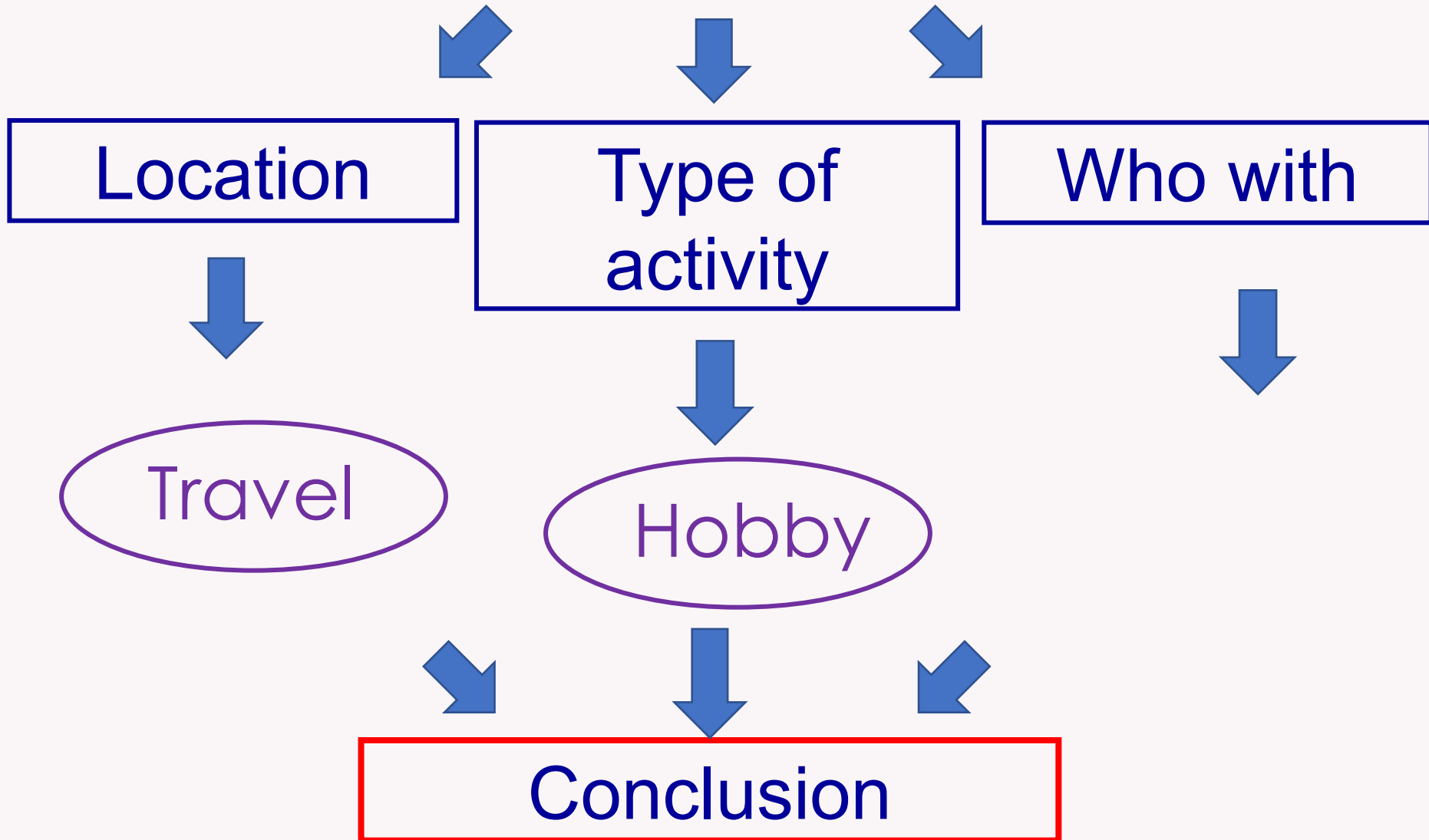
EXERCISE

HEALTHY

HOBBY
EXPENSIVE
WEEKENDS
TRAVEL

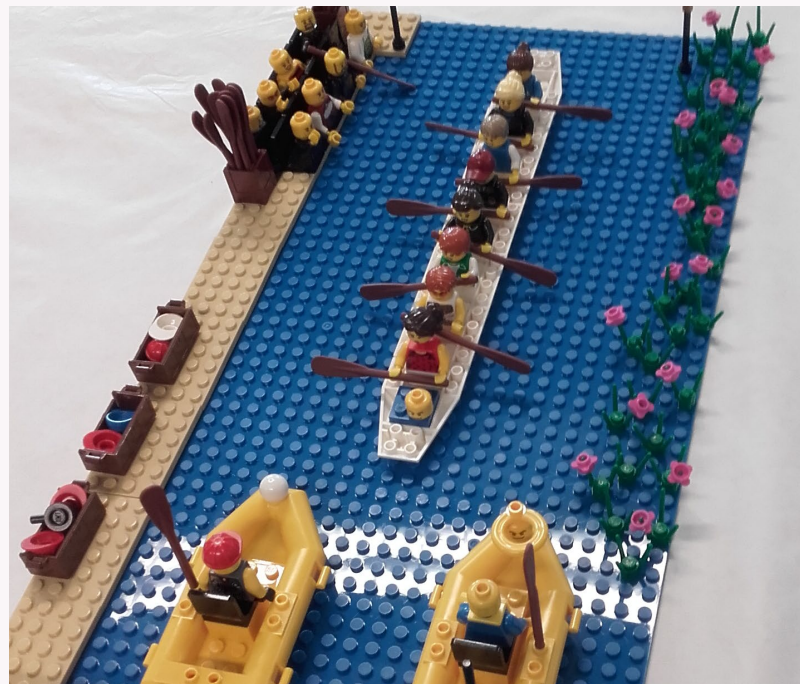


Bricks and rowing are mutually compatible hobbies



Critically evaluate

Critically evaluate the impact of the London 2012 Olympics on the recruitment of recreational rowers.



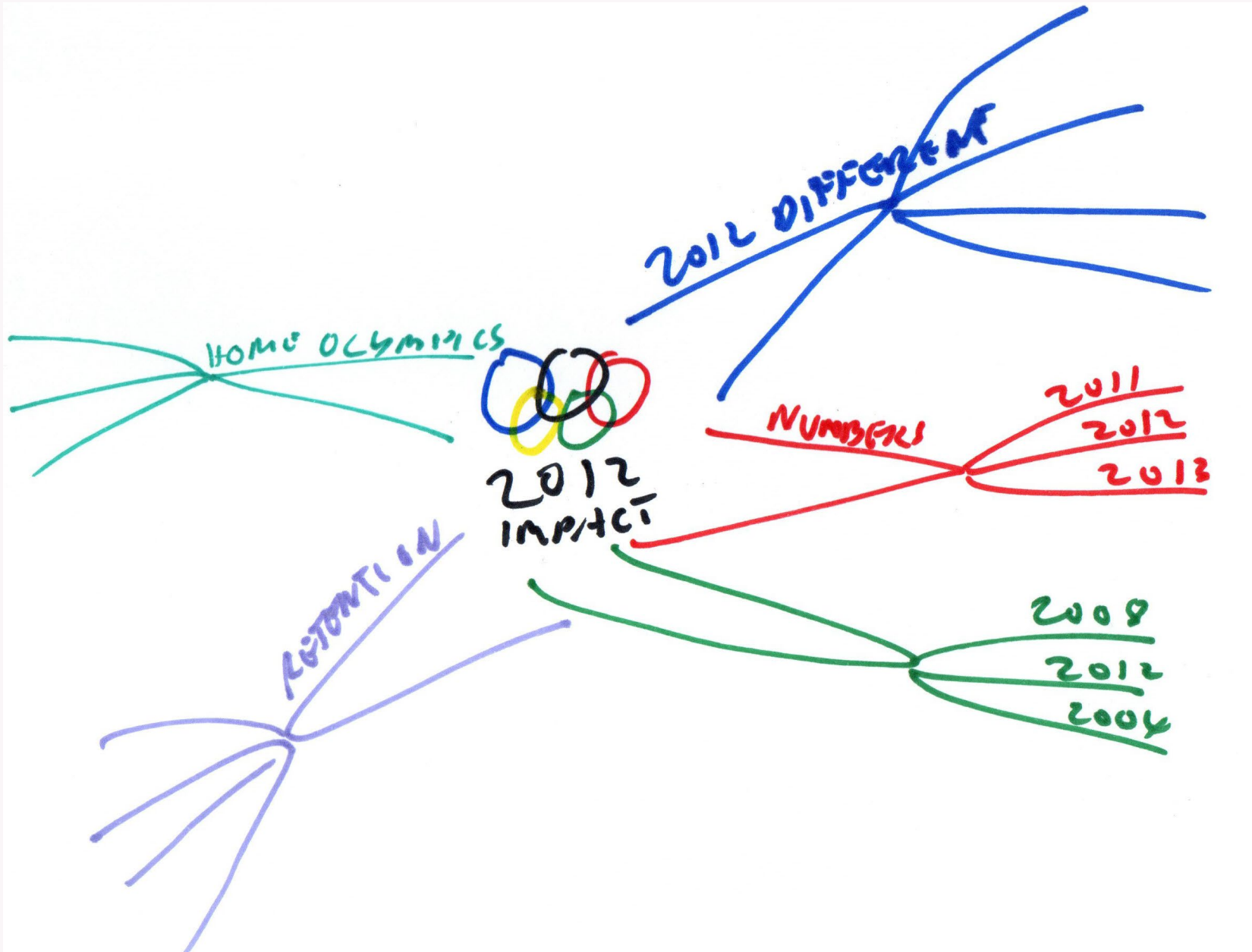
Why was 2012 different from previous Olympics?

What are the recruited numbers in 2011, 2012 and 2013?

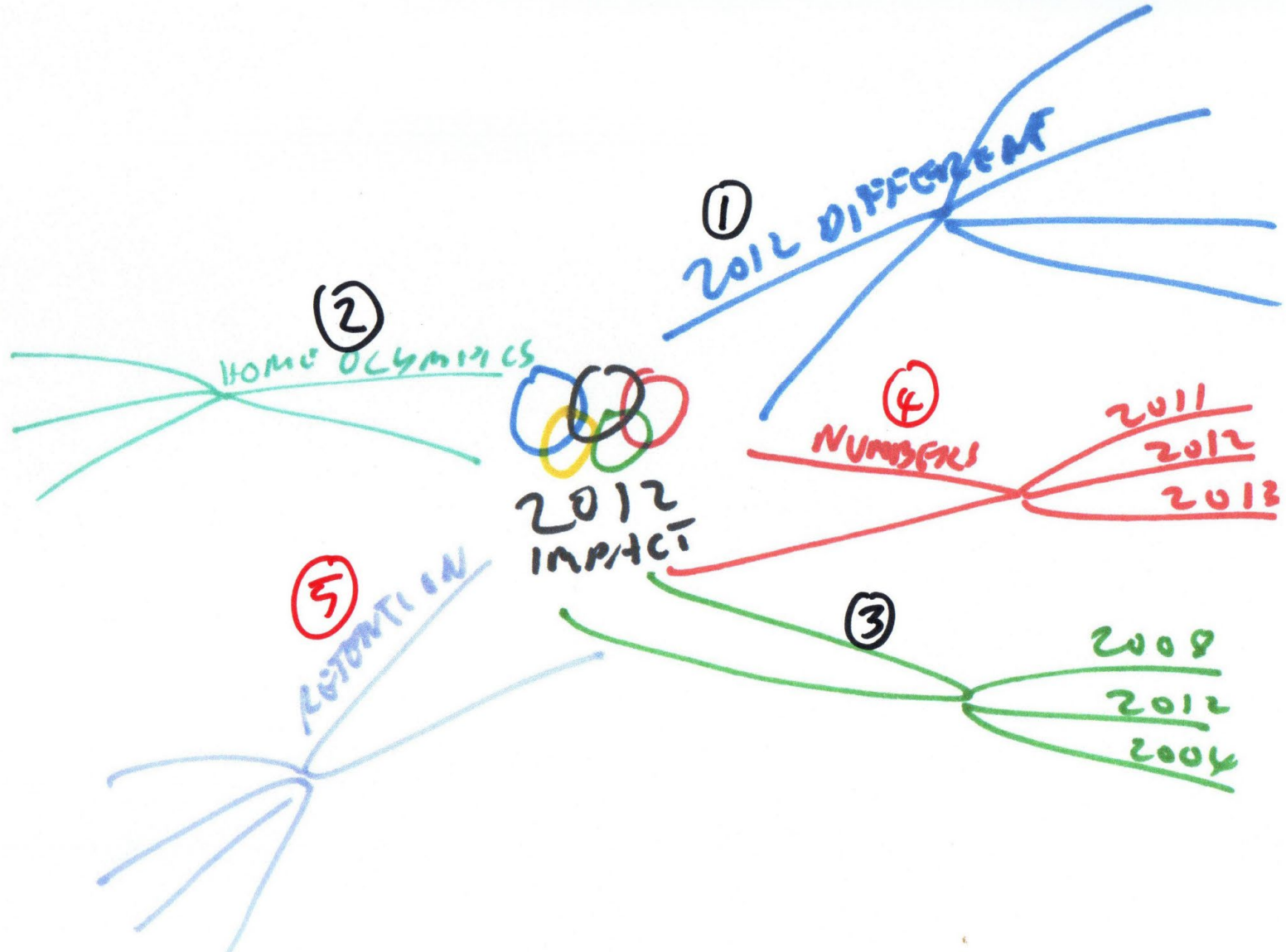
Is there any difference?

Was the location important – home Olympics?

Mindmap



Mindmap



CIA Phoenix list

What is the unknown?

What is it you don't understand yet?

What is the information you have?

Is the information sufficient? Or redundant?

Or contradictory?

What isn't the problem?

Should you draw a diagram of the problem?

Where are the boundaries of the problem?

Can you separate the various parts of the problem?

Can you write them down?

CIA Phoenix list

What are the relationships of the parts of the problem?

What can't be changed and is constant in the problem?

Have you seen this problem before?

Have you seen this problem in a different form?

Can you use someone else's solutions?

Can you restate your problem?

Can you make it more general or more specific?

What are the best, worst and most probable cases you can imagine?

Essay Stages

- Analyse question – process/topic/criteria
- Plan research
- Research
- Return to question
- Brain dump
- Organise brain dump
- List of points
- Plan – evaluate, prioritise
- Map
- Write – no one else will see it yet
- Edit – does it answer the question
- Check – Flow, proofread

Discussion activity (poll)

- There will be 2 specific questions in chat pods for you to explore some of the elements we have discussed further
- ***I am successful at planning essays when...***
- ***I am going to explore my essay planning further by...***
- You are welcome to add your thoughts and we will then pick up some of the themes and talk through them
- Chat does have names on but the recording will be anonymised so you will appear as 'user number'

Take home message

- Content is not enough
- Evaluation is key
- An excellent essay will have far more time spent planning than writing



Feedback please

Please use the following link to provide feedback to help the studenthublive team to continue to improve what we do

<https://forms.office.com/e/BgzqLnzwXW>

Upcoming sessions



1st Nov 11am Developing your essay writing

8th Nov 11 am Mastering essay writing

15th Nov 7pm Creative Problem Solving

22nd Nov 7pm Power reading

29th Nov 7pm Memory and Learning

5th Dec 11am Learning From Feedback

12th Dec 11am Am I too old for this?

14th Dec 7pm SHL Christmas party

9th Jan 11am Managing your time better

16 Jan 7pm OU Essentials

23rd Nov 11am Busting myths around academic conduct

Details and booking information from

<http://studenthublive.open.ac.uk/>

